

## PLASTIC DIFFUSERS & GRILLES STREEMLINE RANGE ADJUSTABLE BLADE DIFFUSER KITS

### FEATURES

- The SL54 are designed to fit in a standard commercial "T bar" ceiling grid
- Louvered biscuits can be adjusted to seven optimum set points using the patented locking system.
- Adjustable blade diffusers allows for airflow adjustments after installation
- Each biscuit can be located to blow in any one of four directions.
- Diffusers are quick and easy to install.
- Louvre blades remain flush with the ceiling at all times with no ugly protrusions below the ceiling.
- Aero foil blade profile reduces air noise at the grille and improves air diffusion.
- The louvre biscuits can be removed and washed.

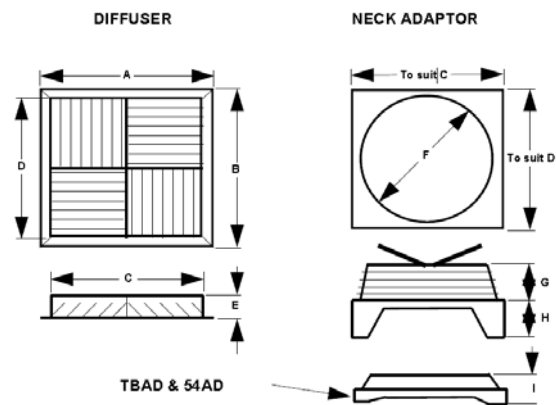
### CONSTRUCTION

- The diffuser is manufactured from white ABS plastic.
- Plastic neck adaptors are manufactured from black ABS plastic.
- The diffuser clips are constructed from Acetyl plastic.

### APPLICATIONS

- Ideal for commercial, refrigerated air conditioning, heating and ventilation applications

### DIMENSIONS



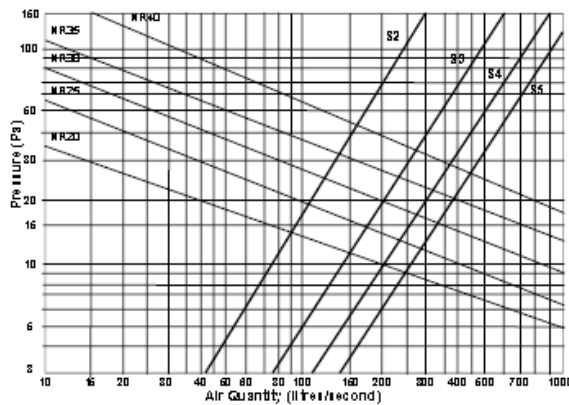
KIT MODEL NO.	A O/all mm	B O/all mm	C Neck mm	D Neck mm	E mm	F Dia mm	G mm	H mm	I mm
SL2WS15*	334	195	280	141	75	150	160	32	na
SL2WS20*	334	195	280	141	75	200	80	32	na
SL3020*	334	334	280	280	60	200	80	32	na
SL3025*	334	334	280	280	60	250	80	32	na
SL3030*	334	334	280	280	60	300	80	32	na
SL2VM20	416	237	365	185	60	200	83	118	na
SL2VM25	416	237	365	185	60	250	83	118	na
SL2VM30	416	237	365	185	60	300	83	118	na

KIT MODEL NO.	A O/all mm	B O/all mm	C Neck mm	D Neck mm	E mm	F Dia mm	G mm	H mm	I mm
SL4020*	416	416	360	360	60	200	80	32	97
SL4025*	416	416	360	360	60	250	80	32	97
SL4030*	416	416	360	360	60	300	80	32	97
SL4030	416	416	360	360	60	300	60	60	na
SL4035	416	416	360	360	60	350	60	60	na
SL4040	416	416	360	360	60	400	60	60	na
SL5440	596	416	540	360	60	400	100	16	75
SL5445	596	416	540	360	60	450	100	16	na
SL5450	596	416	540	360	60	500	100	16	na

## PLASTIC DIFFUSERS & GRILLES STREEMLINE RANGE

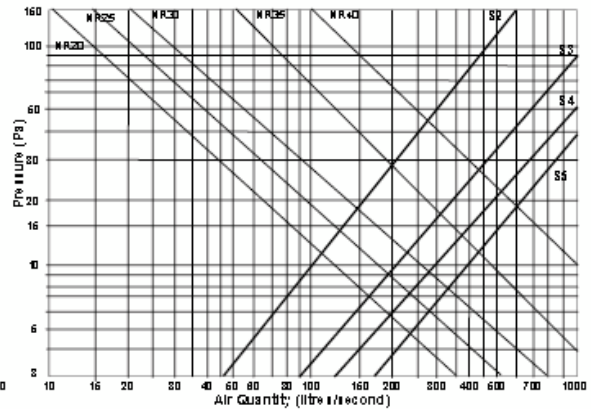
### STREEMLINE RANGE ADJUSTABLE BLADE DIFFUSER KITS PERFORMANCE CHARACTERISTICS

**SL-40** (360x360 Streamline diffuser - 4 way blow)



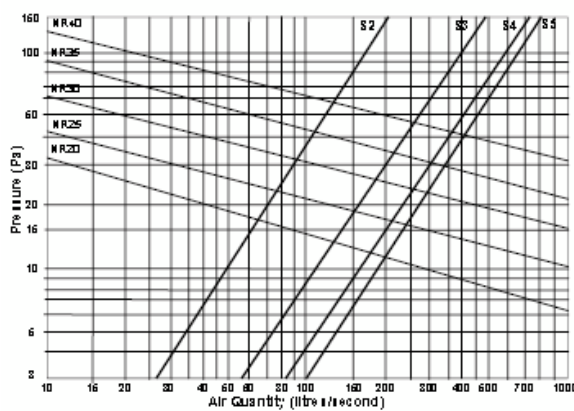
Throws vary: between 1 to 5 meters up to 120 l/s and +5 meters for all air quantities above 120 l/s.

**SL-54** (360x540 Streamline diffuser - 4 way blow)



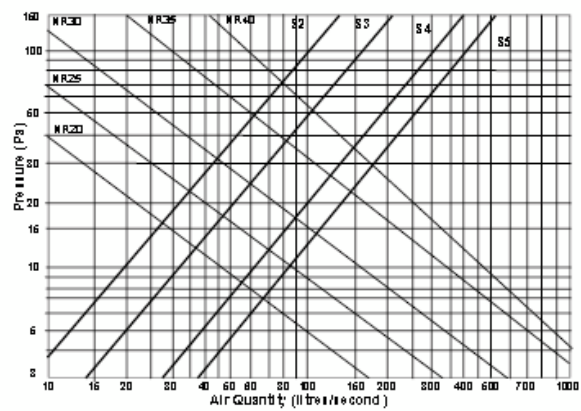
Throws vary: between 1 to 5 meters up to 330 l/s and +5 meters for all air quantities above 330 l/s.

**SL-30** (280x280 Streamline diffuser - 4 way blow)



Throws vary: between 1 to 5 meters up to 200 l/s and +5 meters for all air quantities above 200 l/s.

**SL-2WS** (280x140 Streamline diffuser - 2 way blow)



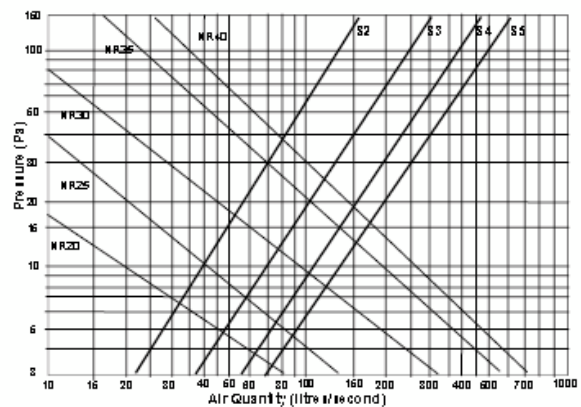
Throws vary: between 1 to 5 meters up to 55 l/s and +5 meters for all air quantities above 55 l/s.

#### LEGEND

- S5** - Blade setting 5
- S4** - Blade setting 4
- S3** - Blade setting 3
- S2** - Blade setting 2
- S1** - Blade fully closed

**NR** - Noise Rating

**SL-2WL** (360x180 Streamline diffuser - 2 way blow)



## PLASTIC DIFFUSERS & GRILLES STREEMLINE RANGE

### FIXED BLADE DIFFUSER KITS

#### FEATURES

- The SL54 are designed to fit in a standard commercial "T bar" ceiling grid.
- Louvered biscuits are molded in one piece and the pitch of the blades is fixed.
- Diffusers are quick and easy to install.
- Louvre blades remain flush with the ceiling at all times with no ugly protrusions below the ceiling.
- Aero foil blade profile reduces air noise at the grille and improves air diffusion.
- Each biscuit can be located to blow in any one of four directions.
- The louvre biscuits can be removed and washed.
- Fixed blade Streamline diffusers are less expensive than adjustable blade diffusers.

#### CONSTRUCTION

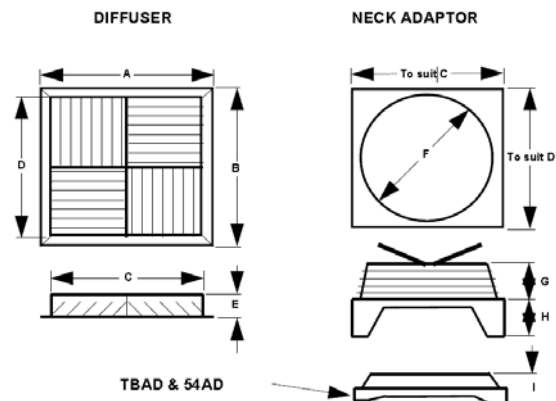
- The diffuser is manufactured from white ABS plastic.
- Plastic neck adaptors are manufactured from black ABS plastic.

- The diffuser clips are constructed from Acetyl plastic.

#### APPLICATIONS

- Ideal for commercial, refrigerated air conditioning, heating and ventilation applications

#### DIMENSIONS



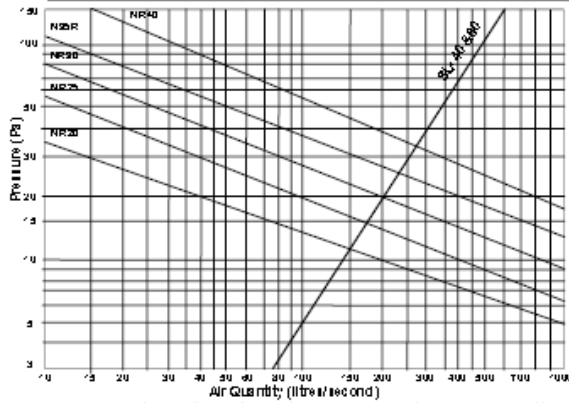
KIT MODEL NO.	A O/all mm	B O/all mm	C Neck mm	D Neck mm	E mm	F Dia mm	G mm	H mm	I mm
SLF2WS15*	334	195	280	141	75	150	160	32	na
SLF2WS20*	334	195	280	141	75	200	80	32	na
SLF3020*	334	334	280	280	60	200	80	32	na
SLF3025*	334	334	280	280	60	250	80	32	na
SLF3030*	334	334	280	280	60	300	80	32	na
SLF2WL20	416	237	365	185	60	200	83	118	na
SLF2WL25	416	237	365	185	60	250	83	118	na
SLF2WL30	416	237	365	185	60	300	83	118	na

KIT MODEL NO.	A O/all mm	B O/all mm	C Neck mm	D Neck mm	E mm	F Dia mm	G mm	H mm	I mm
SLF4020*	416	416	360	360	60	200	80	32	97
SLF4025*	416	416	360	360	60	250	80	32	97
SLF4030*	416	416	360	360	60	300	80	32	97
SLF4030	416	416	360	360	60	300	60	60	na
SLF4035	416	416	360	360	60	350	60	60	na
SLF4040	416	416	360	360	60	400	60	60	na
SLF5440	596	416	540	360	60	400	100	16	75
SLF5445	596	416	540	360	60	450	100	16	na
SLF5450	596	416	540	360	60	500	100	16	na

## PLASTIC DIFFUSERS & GRILLES

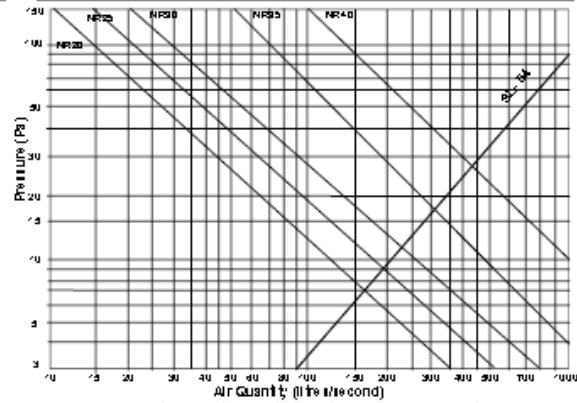
### STREAMLINE FIXED BLADE DIFFUSER PERFORMANCE CHARACTERISTICS

**SL-40** (360x360 Streamline diffuser - 4 way blow)



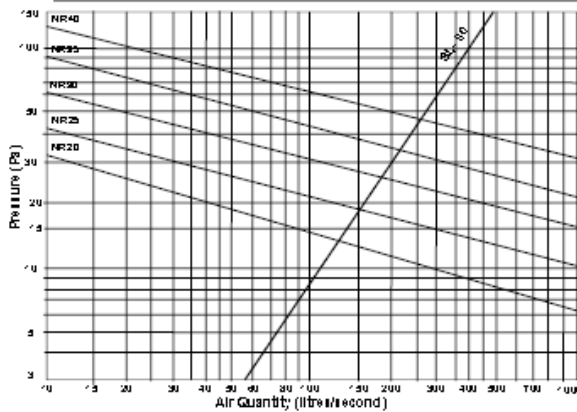
Throws vary between 1 to 5 meters up to 200 l/s and +5 meters for all air quantities above 200 l/s.

**SL-54** (360x540 Streamline diffuser - 4 way blow)



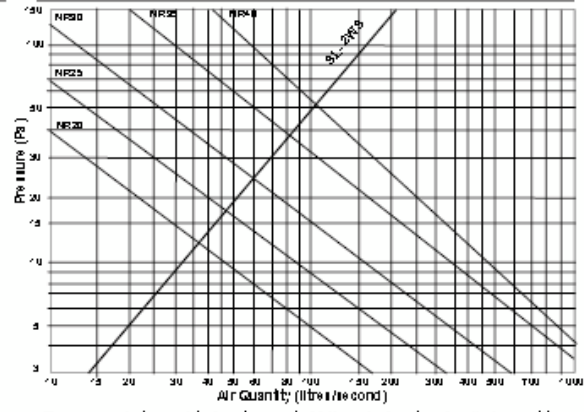
Throws vary between 1 to 5 meters up to 330 l/s and +5 meters for all air quantities above 330 l/s.

**SL-30** (280x280 Streamline diffuser - 4 way blow)



Throws vary between 1 to 5 meters up to 120 l/s and +5 meters for all air quantities above 120 l/s.

**SL-2WS** (280x140 Streamline diffuser - 2 way blow)

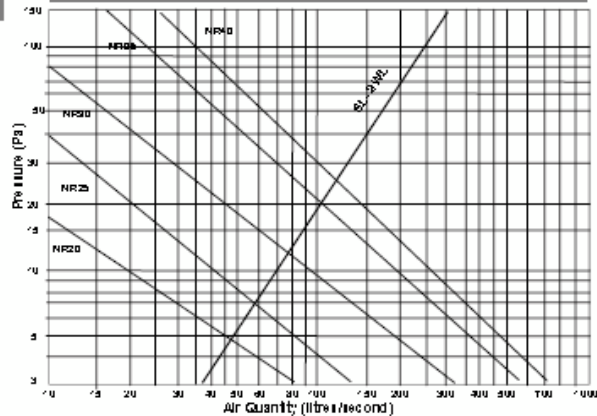


Throws vary between 1 to 5 meters up to 55 l/s and +5 meters for all air quantities above 55 l/s.

#### LEGEND

NR - Noise Rating

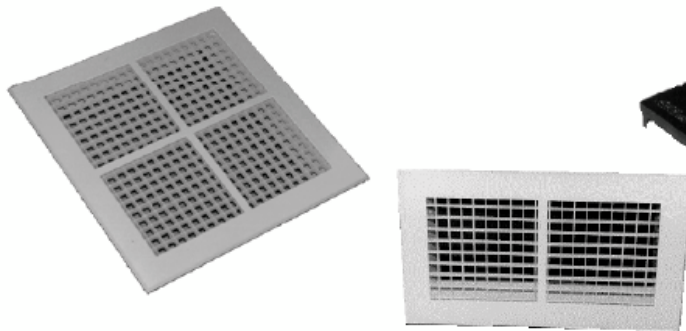
**SL-2WL** (360x180 Streamline diffuser - 2 way blow)



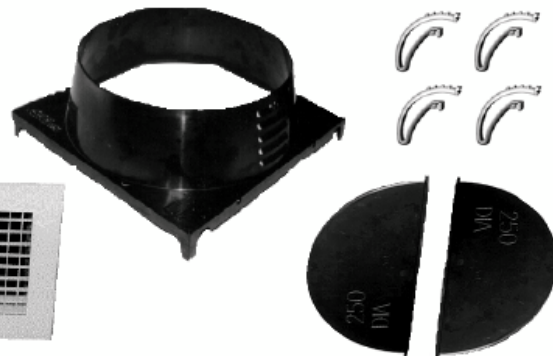
Throws vary between 1 to 5 meters up to 55 l/s and +5 meters for all air quantities above 55 l/s.

# ADVANTAGE AIR®

## PLASTIC DIFFUSERS & GRILLES



## STREAMLINE RANGE EGGCRATE GRILLE KITS



### FEATURES

- The SL54 are designed to fit in a standard commercial "T bar" ceiling grid.
- Eggcrate biscuits are molded in one piece.
- Grilles are quick and easy to install.
- The eggcrate biscuits can be removed and washed.
- Fixed blade Streamline Eggcrate grilles are less expensive than aluminum eggcrate grilles and easier to remove and clean.

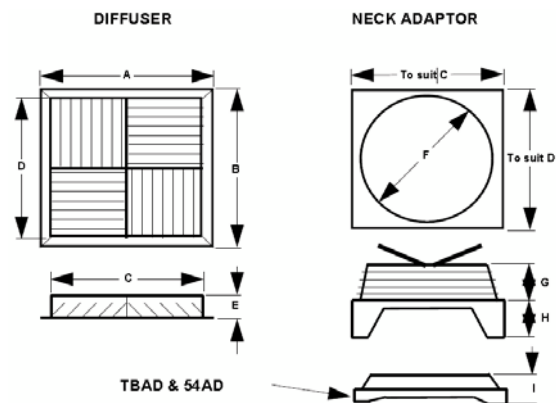
### CONSTRUCTION

- The diffuser is manufactured from white ABS plastic.
- Plastic neck adaptors are manufactured from black ABS plastic.
- The diffuser clips are constructed from Acetyl plastic.

### APPLICATIONS

- Ideal for commercial, refrigerated air conditioning, heating and ventilation applications

### DIMENSIONS



KIT MODEL NO.	A O/all mm	B O/all mm	C Neck mm	D Neck mm	E mm	F Dia mm	G mm	H mm	I mm
SLE2WS15*	334	195	280	141	75	150	160	32	na
SLE2WS20*	334	195	280	141	75	200	80	32	na
SLE3020*	334	334	280	280	60	200	80	32	na
SLE3025*	334	334	280	280	60	250	80	32	na
SLE3030*	334	334	280	280	60	300	80	32	na
SLE2WL20	416	237	365	185	60	200	83	118	na
SLE2WL25	416	237	365	185	60	250	83	118	na
SL2EWL30	416	237	365	185	60	300	83	118	na

KIT MODEL NO.	A O/all mm	B O/all mm	C Neck mm	D Neck mm	E mm	F Dia mm	G mm	H mm	I mm
SLE4020*	416	416	360	360	60	200	80	32	97
SLE4025*	416	416	360	360	60	250	80	32	97
SLE4030*	416	416	360	360	60	300	80	32	97
SLE4030	416	416	360	360	60	300	60	60	na
SLE4035	416	416	360	360	60	350	60	60	na
SLE4040	416	416	360	360	60	400	60	60	na
SLE5440	596	416	540	360	60	400	100	16	75
SLE5445	596	416	540	360	60	450	100	16	na
SLE5450	596	416	540	360	60	500	100	16	na